

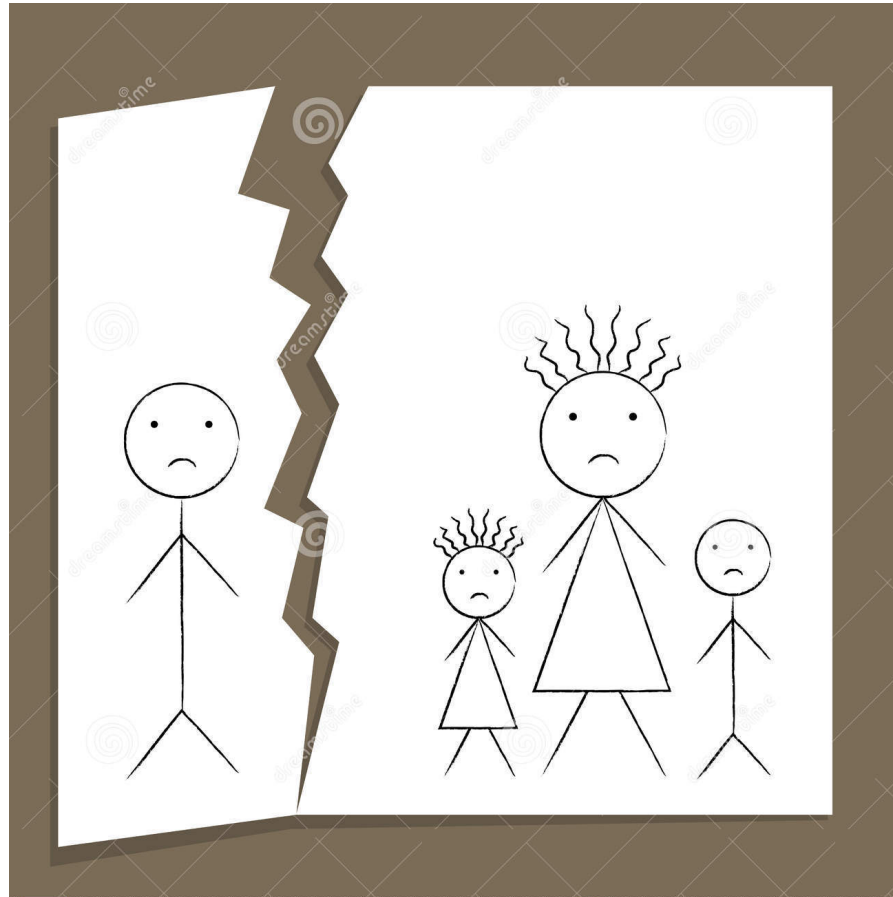
A few thoughts on Duluth



One man's personal view of working
with this model of domestic violence

Phill Turner

A little context





Coercive Controlling Violence

DOMESTIC ABUSE INTERVENTION PROJECT

202 East Superior Street
Duluth, Minnesota 55802
218-722-2781
www.duluth-model.org

Duluth: the basics

- To coordinate the responses of the police, courts and community based organisations to end violence against women
- To hold 'batterers' responsible and put them through a perpetrator group programme
- Based on the theory of patriarchy; that men feel entitled to control and dominate women and intentionally use violence and coercion

“Looking at the impact of men’s violence on women and children”





Mr (Perpetrator) said.....

This really showed me the limited perspective of the Duluth model - assuming that men can only be perpetrators, and women victims



I just felt the men were prevented from speaking about their experiences, and blamed and shamed.

Duluth is a 'one-size-fits-all' model



that clearly doesn't suit everyone



Situational couple violence; Separation instigated violence; Coercive control violence; Violent resistance
Kelly & Johnson (2008)

A question to ask yourself

In your childhood, were the men you knew socialised into either

a). Feeling entitled to dominate women using violence and coercive control?

or

b). Feeling a duty to care and respect for women and avoid violence?

Is data from the group of men here likely to be 'representative'?

- Probably not - we are a self selected group
- But evidence from women in refuges in 1980s Minnesota isn't representative either
- So how can we work more effectively with domestic violence in the diverse social environment of the UK in 2017...?

References

- Kelly JB and Johnson MP (2008). Difference among types of intimate partner violence: Research update and implications for interventions. *Family Court Review*, 46(3): 476 –499.
- Dutton DG and Corvo K (2006). Transforming a flawed policy: A call to revive psychology and science in domestic violence research and practice. *Aggression and Violent Behavior*, 11: 457–483.
- Hoff BH (1999). *What's wrong with the Duluth model?* Accessed at www.batteredmen.com/batdulut.htm
- *Domestic abuse intervention programs*. Home of the Duluth Model. Accessed at <https://www.theduluthmodel.org/>
- C Cannon and F Buttell (2015) Illusion of Inclusion: The Failure of the Gender Paradigm to Account for Intimate Partner Violence in LGBT Relationships. *Partner Abuse*, Vol 6,1,2015